

The Kytola® Model 3630 Constant Flow Regulator is a sturdy, industrial constant flow regulator.

It is designed to provide a constant flow of liquids in applications where supply or backpressure varies and to provide a constant flow of gases in applications where backpressure varies.



Model 3630 equipped with model L flow meter

- For liquid and gas
- High performance
- Reliable operation
- Easy maintenance
- Flow rate up to 24 USGPH H₂O
2.3 SCFM air

ISO 9001 ISO 14001

CONSTANT FLOW REGULATOR 3630

Model 3630 is a membrane type differential pressure controller. It is supplied with Model L variable area flow meter for flow rate indication and setting.

FEATURES

Aluminium or stainless steel construction

Vertical installation

Competitively priced

TYPICAL APPLICATIONS

Water purging for instruments

Air purging in level measurements

Gas purging in Δp measurements

OPTIONS

Thread adapters

Flow alarm

Model 3630

Max. flow	24 USGPH H ₂ O, 2.3 SCFM at 87 psig air 1.5 L/min H ₂ O, 60 NL/min at 6 bar(g) air	Weight	1.1 lbs (0.5 kg) aluminium body 2.4 lbs (1.1 kg) AISI 316 body
Max. differential pressure	145 psi (10 bar)	Membrane plate	Nylon (PA 6) (*PVDF)
Max. static pressure	290 psi (20 bar)	Membrane	EPDM
Minimum required pressure drop	29 psi (2 bar)	Mesh	PTFE
Max. temperature	167°F (75°C) / *176°F (80°C)	Seals	Nitrile (*Viton®, EPDM)
Body	Aluminium or stainless steel AISI 316	Installation position	Vertical
Spring	Stainless steel AISI 316	Connections	NPT 1/4" or G 1/4"

*) Special construction on request

Regulator Material

Aluminium (not for H ₂ O)	A
AISI 316	H

Connections

G 1/4"	standard, leave empty
NPT 1/4"	N

Flow Range H ₂ O		Flow Range Air		
USGPH	L/min	SCFH	NL/min	
0.2 – 1.3	15 – 80**	1.5 – 6	0.5 – 2.5*	4C
0.2 – 2.0	0.01 – 0.13	1 – 14	0.5 – 6*	5K
0.2 – 3.6	0.01 – 0.2	1 – 16	0.5 – 7*	5A
0.5 – 5.5	0.025 – 0.325	2 – 24	1 – 10*	5B
1 – 8.5	0.05 – 0.5	4 – 32	2 – 14*	5C
2 – 12	0.1 – 0.75	7.5 – 45	3 – 20*	8T
2 – 17	0.1 – 1	10 – 70	5 – 30*	8M
4 – 26	0.2 – 1.6	20 – 120	10 – 50*	8P

**mL/min

Factory assigned model number for special range **XX**

Scale

H ₂ O L/min (20°C)	A
H ₂ O USGPH (70°F)	N
Relative scale 1–10	D
Factory assigned model number for special scale	XX

Flow Tube Material

Acrylic	A
Grilamid TR55	G

Special Features

Hand knob in valve	H
Viton® seals	V

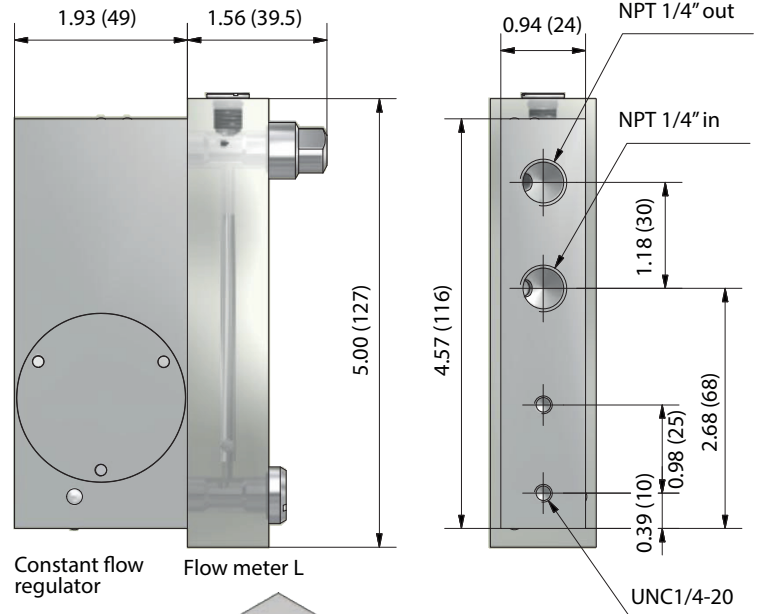
*Example air ranges at 70°F / 14.7 psia (20°C / 1.013 bar abs) for calibration purpose only

NOTE: When ordering special flow meters (range or scale or both), process conditions must be mentioned as shown in the special product code example below.

NOTE: The gas scale always has to be calibrated according to the actual medium, inlet pressure, and temperature. Δp over the regulator must be ≥ 29 psi (2 bar).

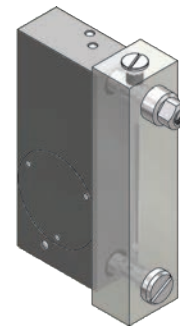
PRODUCT CODE EXAMPLES

Standard product code	3630H-N-8TN-AHV
Special product code	3630A-N-XXXX-AH
Medium	CO ₂
Max flow rate	13 NL/min
Min flow rate	1 NL/min
Inlet pressure	5 bar(g)
Operating temperature	+20°C



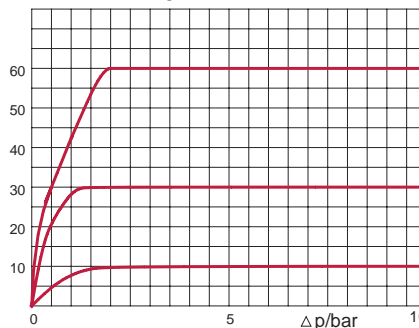
Constant flow regulator

Flow meter L

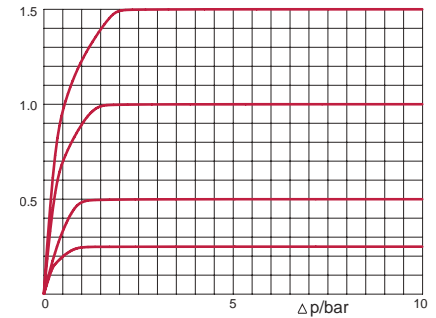


NOTE: Measurements in the drawings in this datasheet are in inches (and millimeters) if not stated otherwise.

NL/min Air at 6 barg



L/min H₂O



PERFORMANCE