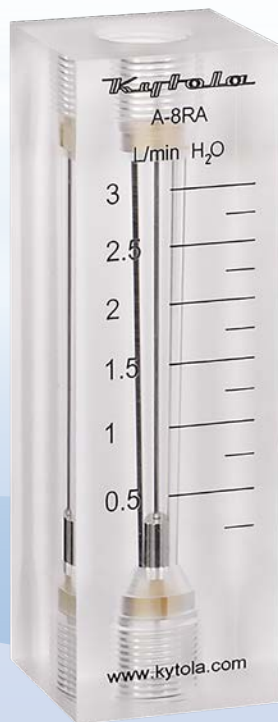


The KYTOLA® variable area flow meter model A is a clear, easy to read acrylic flow meter.

It is a reliable instrument for measuring and monitoring liquid and gas flows.



- For liquid or gas
- Flow rate water up to 1.7 USGPM (6.5 L/min)
- Flow rate air up to 8.5 SCFM (220 NL/min)
- Maximum pressure 290 psi (20 bar)
- Maximum temperature 167°F (75°C)

ISO 9001 ISO 14001

FLOW METER A

FEATURES

- Machined acrylic body
- Clear, easy to read scales

TYPICAL APPLICATIONS

- Water treatment
- Sealing water measurements
- Gas flow measurements

OPTIONS

- Scales for alternative liquids and gases
- Special scale markings
- Thread adapters

Model

A

Connections	G 3/8", thread adapters must be used for NPT connections
Body	Acrylic (PMMA)
Max. pressure	290 psi (20 bar), 440 psi/85°F (30 bar/30°C)
Max. temperature	167°F (75°C)
Weight	6.7 oz (190 g)
Accuracy	±5% F.S. (H ₂ O, +70°F)

A-

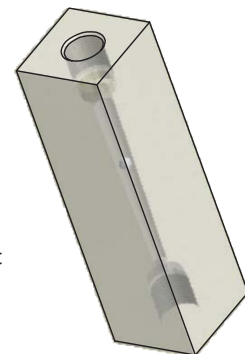
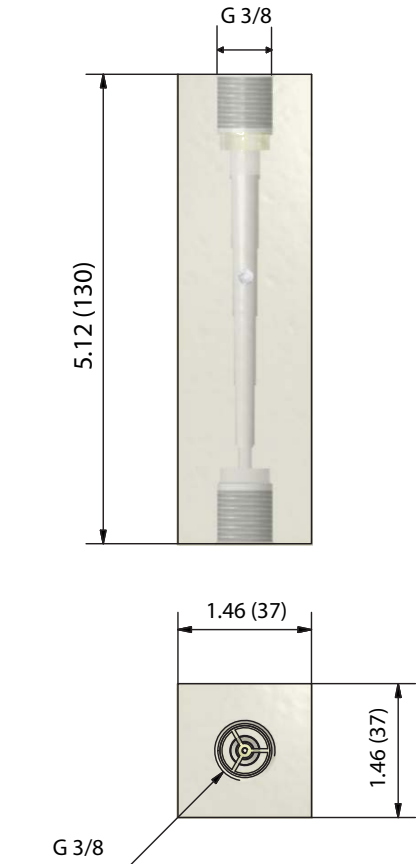
Flow Range H ₂ O USGPH	H ₂ O L/min	Air SCFH	Air NL/min	
0.04 – 0.3	2 – 20 mL/min	0.2 – 2	0.1 – 0.9	2K
0.05 – 0.55	4 – 34 mL/min	0.2 – 3	0.1 – 1.3	2A
0.1 – 0.95	5 – 60 mL/min	0.75 – 4.5	0.2 – 2	2B
0.2 – 1.5	10 – 95 mL/min	1.5 – 6	0.4 – 2.8	2C
0.2 – 2.0	0.01 – 0.13	1 – 14	0.5 – 6.5	3K
0.25 – 3.5	0.02 – 0.22	2 – 18	0.5 – 8	3A
0.5 – 5.5	0.02 – 0.36	4 – 26	1 – 11	3B
0.5 – 8.5	0.05 – 0.5	7.5 – 32.5	1 – 14	3C
H ₂ O USGPM	H ₂ O L/min	Air SCFM	Air NL/min	
0.025 – 0.3	0.1 – 1.1	0.2 – 1.2	4 – 30	8M
0.05 – 0.5	0.2 – 1.8	0.2 – 2	5 – 50	8P
0.05 – 0.65	0.2 – 2.6	0.2 – 2.8	5 – 75	8S
0.1 – 0.8	0.25 – 3	0.5 – 3.5	10 – 90	8R
0.1 – 1.4	0.5 – 5	0.5 – 5.5	10 – 150	5A
0.2 – 1.7	0.5 – 6.5	1 – 8.5	20 – 220	8D

Scale

H ₂ O scale L/min (20°C)	A
H ₂ O scale USGPM (70°F)	G
H ₂ O scale USGPH (70°F)	N
Air NL/min (20°C, 1.013 bar)	R
Air scale SCFM (70°F, 14.7 psia)	T
Air SCFH (70°F, 14.7 psia)	V
Relative scale 0–10	D

NPT Adapters (two required)

ZADR3/8N1/4K	Nylon	3/8" G x 1/4" NPT
ZADR3/8NK	Nylon	3/8" G x 3/8" NPT
ZADR3/8N1/2K	Nylon	3/8" G x 1/2" NPT
ZADR3/8N1/4H	AISI316	3/8" G x 1/4" NPT
ZADR3/8NH	AISI316	3/8" G x 3/8" NPT
ZADR3/8N1/2H	AISI316	3/8" G x 1/2" NPT



NOTE: Measurements in the drawings in this datasheet are in inches (and millimeters) if not stated otherwise.

Kytola
INSTRUMENTS

www.kytola.ca



Kytola Instruments Inc.

900 Old Roswell Lakes Parkway, Suite 120

Roswell, GA 30076, USA

Tel: +1 678 701 3569

Fax: +1 514 448 5151

E-mail: flow@kytola.ca