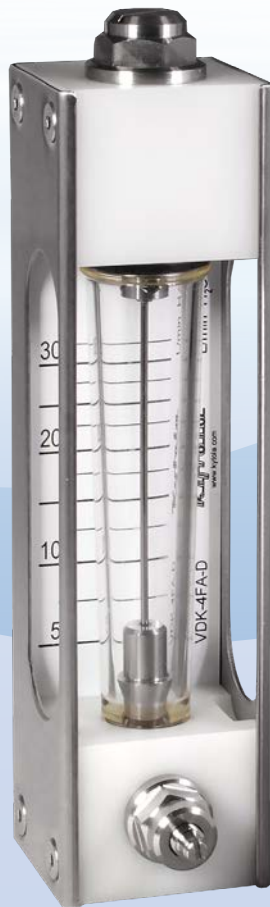


KYTOLA® Model VD Variable Area Flow Meter is designed for reliable measuring and monitoring of liquid and gas flows.

It comes in a range of different options and offers a choice of end blocks – aluminium, stainless steel AISI 316 or polyamide.



- For liquid or gas
- Sturdy construction
- Impact resistant flow tube
- Alarm-ready
- Scales for alternative liquids and gases

ISO 9001 ISO 14001

FLOW METER VD

FEATURES

- Large selection of materials
- Built-in flow adjustment valve and quick change flow tube
- CRN approved select models

TYPICAL APPLICATIONS

- Lubrication oil measurement
- Sealing and cooling water measurement
- Flush water applications
- Gas flow measurements

OPTIONS

- Low and high flow alarm
- Viton or EPDM seals
- PES flow tube
- Hand knob in valve

Model	VDA	VDH	VDK
End blocks	Aluminium	AISI 316	Nylon
Side plates	AISI 316	AISI 316	AISI 316
Max. pressure	440 psi (30 bar)	440 psi (30 bar)	290 psi (20 bar)
Max. temperature	175°F(80°C),*248°F(120°C)	175°F(80°C),*248°F(120°C)	175°F(80°C)
Weight	1.7 lbs (0.75 kg)	4.4 lbs (2.00 kg)	2.1 lbs (0.95 kg)
Valve housing	Aluminium	AISI 316	AISI 316
Valve spindle	AISI 316	AISI 316	AISI 316
Flow tube	Grilamid (PA-12) (*PES)		
Connections	NPT 1/2" or G 1/2"		
Float	AISI 329 or AISI 329/PTFE (depending on range)		
Seals	Nitrile (*Viton®, EPDM)		
Accuracy	±5% F.S. H ₂ O, 70°F (20°C)		

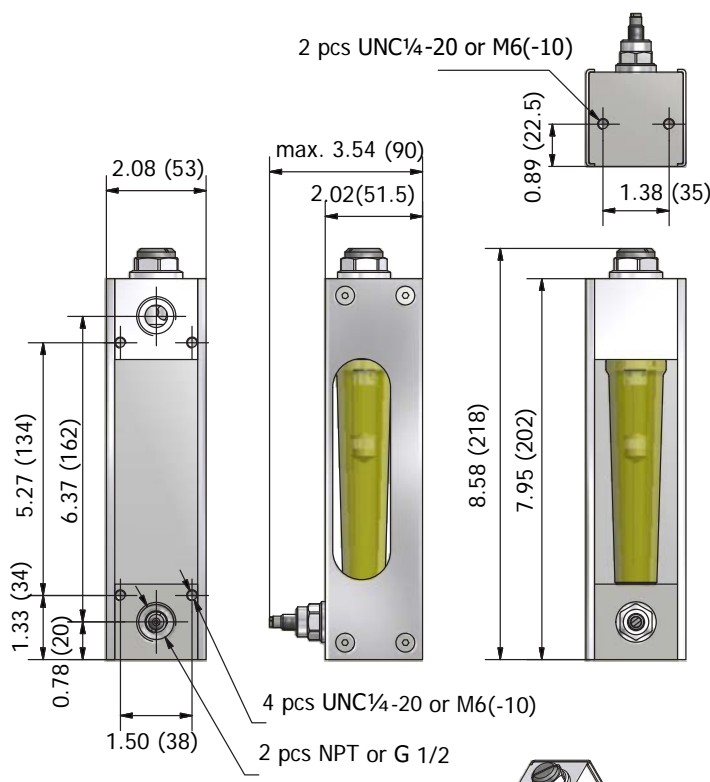
*Special construction on request

End Block Material				
Aluminium (not for H ₂ O)				A
AISI 316				H
Nylon				K

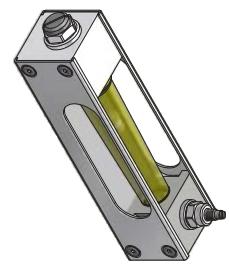
Flow Range H ₂ O		Flow Range Air		
USGPM	L/min	SCFM	NL/min	
0.1 – 0.5	0.4 – 2	0.5 – 2.75	15 – 75	6H
0.2 – 0.9	0.75 – 3	1 – 5	30 – 130	3H
0.4 – 1.4	1.25 – 5	1.5 – 7	40 – 180	3K
0.6 – 2.2	2 – 9	2.5 – 11	80 – 280	3L
0.7 – 2.6	2.5 – 10	3 – 12	75 – 325	3M
0.75 – 4	3 – 16	4 – 20	100 – 600	4N
1 – 4.5	4 – 17	5 – 25	100 – 650	4D
1 – 6.0	4 – 22	5 – 45	100 – 1100	4E
1.5 – 8.5	7.5 – 32.5	–	–	4F

Scale		
H ₂ O L/min (20°C)		A
H ₂ O USGPM (70°F)		G
Air NL/min (20°C, 1.013 bar abs)		R
Air SCFM (70°F, 14.7 psia)		T
Relative 1–10		D

Features		
Alarm readiness		D
G connections	blank	
NPT connections		N
Grilamid flow tube, nitrile seals	blank	
PES flow tube, nitrile seals		V
PES flow tube, Viton® seals		W
Grilamid flow tube, Viton® seals		X
EPDM seals		Y
Hand knob in valve		H



NOTE: Measurements in the drawings in this datasheet are in inches (and millimeters) if not stated otherwise.



Standard feature: leave *blank*
 Special feature: choose Character



www.kytola.ca



Kytola Instruments Inc.
 900 Old Roswell Lakes Parkway, Suite 120
 Roswell, GA 30076, USA
 Tel: +1 678 701 3569
 Fax: +1 514 448 5151
 E-mail: flow@kytola.ca

Copyright © Kytola Instruments Oy 2019. Dimensions and measurements are given within normal tolerances. Manufacturer reserves the right to changes without prior notification. File VD_es16WA_en Published 10/2019.