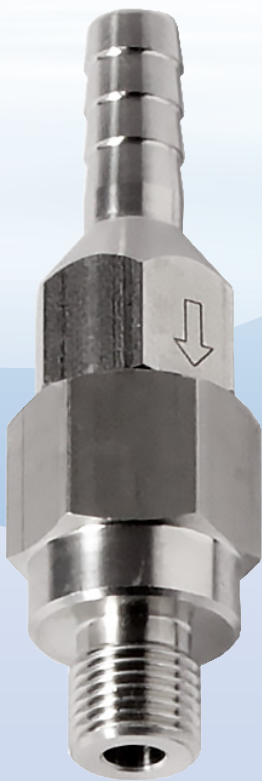


KYTOLA® check valve Model CV is a spring loaded device, which allows free flow of medium in one direction but closes immediately upon flow ceasing or changing direction.

Reverse flow is prevented, thereby protecting any measuring or regulating equipment from process media.



- Closes if flow stops or reverses
- Withstands corrosive media
- Maximum pressure 300 bar
- Easily removed

CHECK VALVE CV

FEATURES

Robust stainless steel construction
Can be mounted in any position

TYPICAL APPLICATIONS

Liquid feed lines
Gas feed lines
Pressurised sealing water systems

Model

CV

Body	AISI 316
Seals	Viton®
Max. pressure	300 bar
Max. differential pressure	5 bar
Opening pressure	0.25 bar

CV

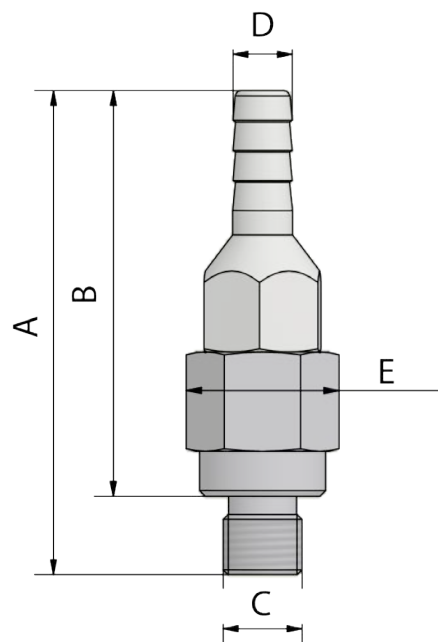
Connections

G	R
NPT	N

Inlet

Outlet

10mm (3/8") hose connector	G/NPT 1/4"	1/4-10
10mm (3/8") hose connector	G/NPT 3/8"	3/8-10
10mm (3/8") hose connector	G/NPT 1/2"	1/2-10



Size	A	B	C	D	E
1/4-10	80,5	67,5	G 1/4	Ø10	22
3/8-10	59	46	G 3/8	Ø10	19
1/2-10	68,5	51	G 1/2	Ø10	22